

CEILING BRIDGE TYPE

Architectural

BEDHEAD UNIT

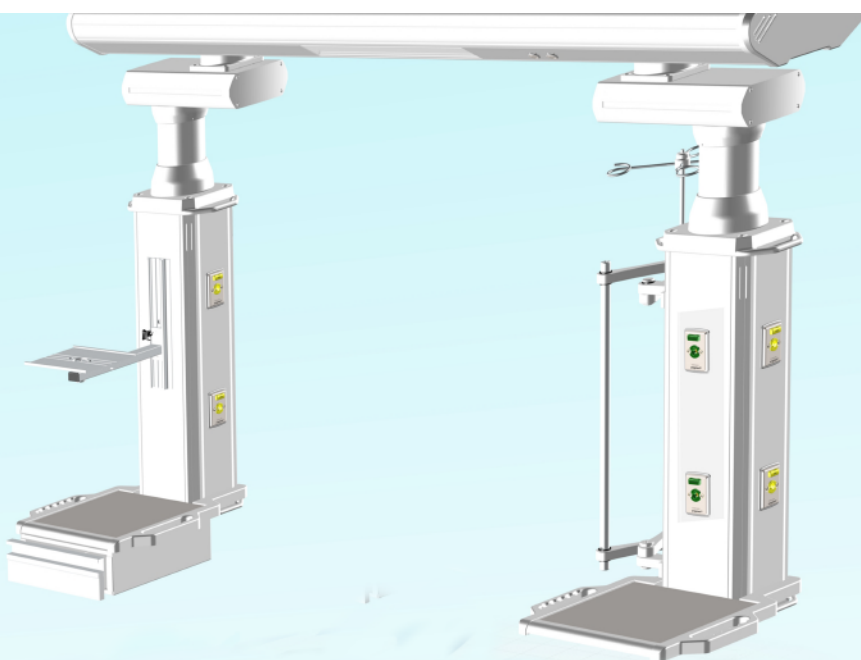
ARQ



ARQ



2015 Edition



Structure

MATERIALS

● Structure:

Aluminium profile extrusion 6063 T5 alloy meeting ASTM B221-02/AA internal channels duct type to medical gas, electrical, data and lighting. Solid state separation (not removable). High load ball steel bearing Swivel joint with aluminium foundry enclosure.

SPECIFICATIONS

It can include Fixed or rotary arms movement to the service columns, medical gas, electrical, data & auxiliary medical equipment supports and devices can be arranged properly by the medical staff.

It was designed to free wall mounted enclosures, devices and installations, add rotary movement from the ceiling bridge to increase flexibility of medical patient care.

CONFIGURATION

- To 1 bed service.
- More than 1 bed (only linear configurations).
- To different dimensions and specs, must be consulted to the factory previously.

Maximum Load Capacity 260 kg/m

MEDICAL SUPPORT AND SLIDE ACCESSORIES

It can include from 6-8 vertical service rails to support and slide medical auxiliary equipment in the patient service column, aluminium made.

PATIENT LIGHTING

T8 LED tube 60cm length, 110-220v main power 60-50 hz, 4,300°k color light (day light/white) to environment and patient reading lighting.

Plastic extrusion transparent Polycarbonate diffusers self supported to vertical bedhead unit aluminium structure.

Button type light switch to environment and patient reading lighting.

*** Installation must be performed by medical gas certified personnel ***

GRUPO ARIGMED S. DE R.L. DE C.V. TIZAYUCA, ESTADO DE HIDALGO, MÉXICO

www.arigmed.com Arigmed Medical Gas Equipments ventasmx@arigmed.com +52 779 79 69 370



CERTIFIED

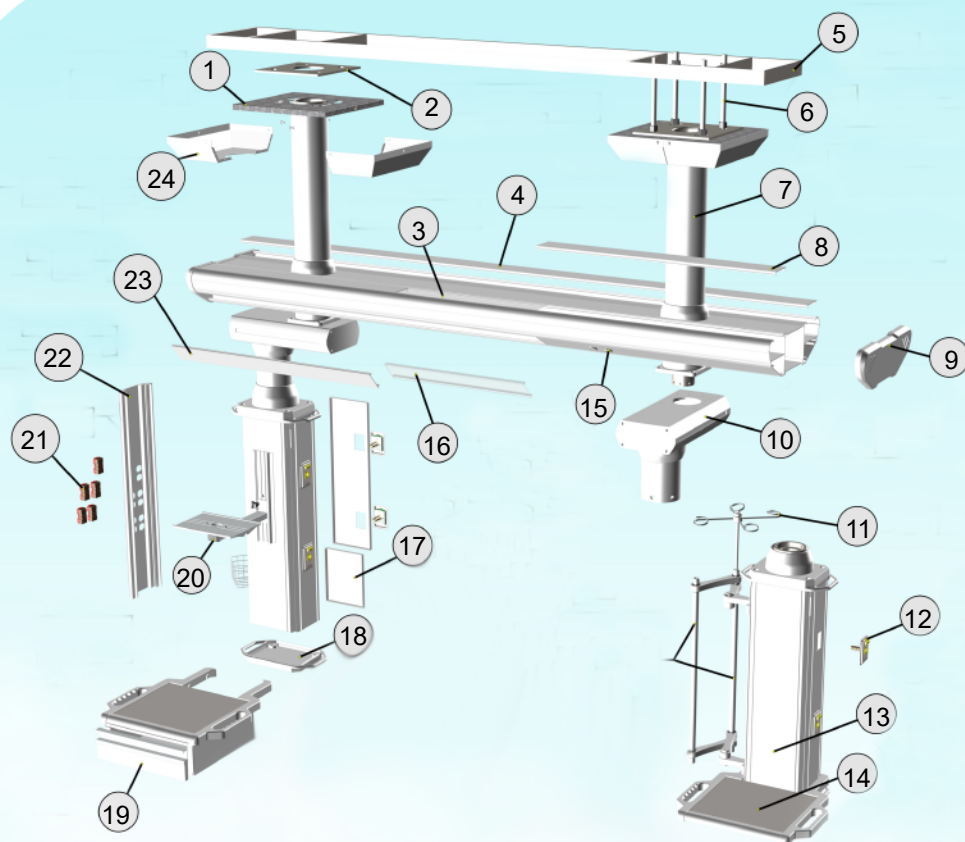


CEILING BRIDGE TYPE

Architectural

BEDHEAD UNIT

ARQ



Item:	Description:
1	Mounting Plate
2	Mounting Plate Ceiling Support
3	Environmental Light
4	Aluminium cover panel
5	Ceiling Support
6	Steel stud support (not included)
7	Aluminium post support
8	Aluminium cover panel
9	Aluminium end cap
10	Swivel arm (can be optional)
11	I.V. Hook support
12	Medical gas outlet
13	Service Column
14	Service support tray, inox steel made
15	Electrical switch
16	Light difusser
17	Service Panel
18	End cap service column
19	Guard
20	Patient monitor tray type support
21	Electrical outlet
22	Aluminium frame service column
23	Aluminium service panel
24	Ceiling cover



ELECTRICAL OUTLETS

It can accept all kinds of electrical outlets models according with local or international electric codes.

MEDICAL GAS AND VACUUM INLET-OUTLETS

Mounted on the service column, include an assemble of rigid type K copper pipe and polyvinyl hose 200 PSI maximum pressure. Bedhead ceiling bridge type unit can allow the assembly of any kind of medical gas outlet.

Complies with NFPA99-2015 exclusively with systems and devices of electrical, light and medical gases that have been assembled from factory origin.

In the case the bridge bedhead unit has been supplied partially or modified in the components and systems of factory origin, we disclaim any responsibility for risk and injuries and damages to people and properties.