

Medical Gas Outlet

DISS CGA-V5 type



ISO 9001:2015, ISO 13485:2016

Materials:

- **Front Assembly:** 100% Stainless steel sheet made, 18 gauge polished 3, threaded connect coupling inlet designed for **DISS CGA-V5** technology.
- **Back Assembly:** Brass made with a spring-loaded secondary check valve, it includes a 3/8" diameter O.D. "K" type copper tube with a 0.20m extension for valve connection, 360° rotation for easy connection.

Mounting versions:

- **Wall recessed:** Hardware made of 18 gauge nickel finished steel sheet modular assembly with position PIN register for non-crossing connection compatible with USA standards, **meeting NFPA99 and CGA codes.**
- **Architectural equipment mount:** Hardware made of 18 gauge nickel finished steel sheet individual assembly with position PIN register for non-crossing connection compatible with USA standards, **meeting NFPA99 and CGA codes.**

Coupling type and Safety System:

- **Coupling:** Threaded connect coupling, 100% compatible with DISS CGA-V5 technology for the following gases: oxygen, medical air, medical vacuum, nitrous oxide co2, nitrogen, instrumental air and wagd.

Note: Measurement variation between non-recognized brand secondary equipment connectors could result in failure of the secondary equipment holding.

- **No crossing connection medical gases system:**

Pin position system (PIN) to avoid cross-connection between primary and secondary valve, and designated for each type of medical gas, compatible with U.S.A standard



Wall recessed






To architectural equipment

Installation must be performed by personnel with current ASSE6010 and ASME BRAZER IX certification
(Medical gas system installer and qualified oxy-acetylene welder)

Intellectual Property Notice: All rights reserved. This document is the intellectual property of the content and images of GRUPO ARIGMED S. DE R.L. DE C.V. Any type of copy, similarity or plagiarism will be subject to pertinent legal action to prevent its use by unauthorized persons or organizations, as well as to compensate the damage caused to the author.



GRUPO ARIGMED S. DE R.L. DE C.V. TIZAYUCA, ESTADO DE HIDALGO, MÉXICO

www.arigmed.com  Grupo Arigmed Gases Medicinales  ventasmx@arigmed.com  +52-779-7969-370



Sistema de Gestión
ISO 9001:2015

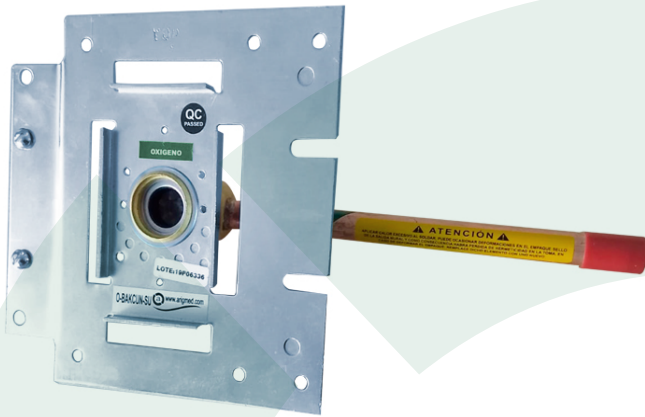


Medical Gas Outlet DISS CGA-V5 type

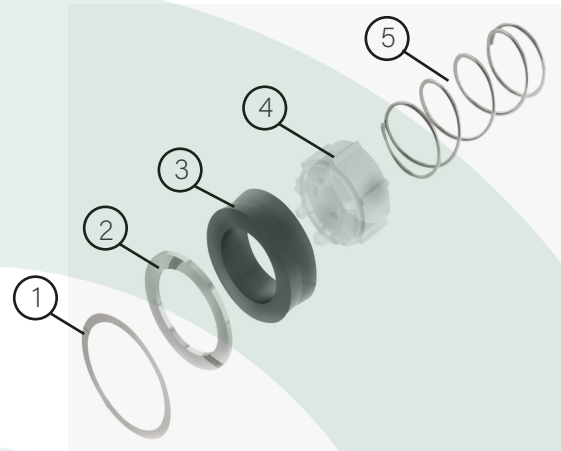
technical
brochure
Medical Gases



Wall recessed back assembly



Back assembly spare parts



Architectural mount back assembly



item	Description
1	Stainless steel washer
2	Stainless steel spiral lock
3	Seal
4	Injected plastic check
5	Calibrated spring

Specifications:

Flow:

- *Output of 240 LPM, if the diameter of the pipes allows it.
- *Extraction of 90 LPM, if the diameter of the pipes allows it.

Working pressure:

*50-55 PSI , 160-180 PSI

Maximum pressure test:

*100 PSI , 180 PSI (Only with the front assembly coupled)

Secondary equipment capacity load:

*450 g

I.D. available color label:

*NFPA *ISO

Cleaning:

*NFPA99 *ASTM B819

Trim plate:

Wall recessed:

*Zamak injection with chrome finish made.

To architectural equipment mount:

*High-strength ABS plastic injection in white or gray made.

Available gases in this technology:

		Medical Oxygen		Wagd
		Medical air		Carbon dioxide
		Vacuum		Nitrogen
		Nitrous Oxide		Instrumental air

*Complies with NFPA99 (Section 5.1.5) for equipment whose components have been factory assembled and mounted.

If the equipment was installed with non-original components and/or with modifications and alterations carried out by third parties, **GRUPO ARIGMED disclaims any liability that may cause injury and damage to persons and property, and factory certifications and warranties will be automatically voided.**

ENGER. 2



GRUPO ARIGMED S. DE R.L. DE C.V. TIZAYUCA, ESTADO DE HIDALGO, MÉXICO

www.arigmed.com Grupo Arigmed Gases Medicinales ventasmx@arigmed.com +52-779-7969-370



Sistema de Gestión
ISO 9001:2015



www.tuv.com
ID: 300020264