

# Medical Gas Outlet

## OHMEDA DIAMOND type



ISO 9001:2015, ISO 13485:2016

### Materials:

- **Front Assembly:** 100% Stainless steel sheet made, 18 gauge polished 3, quick connect coupling inlet designed for **OHMEDA DIAMOND** technology.
- **Back Assembly:** Brass made with a spring-loaded secondary check valve, it includes a 3/8" diameter O.D. "K" type copper tube with a 0.20m extension for valve connection, 360° rotation for easy connection.

### Mounting versions:

- **Wall recessed:** Hardware made of 18 gauge nickel finished steel sheet modular assembly with position PIN register for non-crossing connection compatible with USA standards, **meeting NFPA99.**
- **Architectural equipment mount:** Hardware made of 18 gauge nickel finished steel sheet individual assembly with position PIN register for non-crossing connection compatible with USA standards, **meeting NFPA99.**

### Coupling type and Safety System:

- **Coupling:** PIN position type quick coupling, 100% compatible with OHMEDA DIAMOND technology for the following gases: oxygen, medical air, medical vacuum and nitrous oxide.

**Note: Measurement variation between non-recognized brand secondary equipment connectors could result in failure of the secondary equipment holding.**

- **No crossing connection medical gases system:**

Pin position system (PIN) to avoid cross-connection between primary and secondary valve, and designated for each type of medical gas, compatible with U.S.A standard



Wall recessed






To architectural equipment

\*\*\*Installation must be performed by personnel with current ASSE6010 and ASME BRAZER IX certification\*\*\*  
(Medical gas system installer and qualified oxy-acetylene welder)

Intellectual Property Notice: All rights reserved. This document is the intellectual property of the content and images of GRUPO ARIGMED S. DE R.L. DE C.V. Any type of copy, similarity or plagiarism will be subject to pertinent legal action to prevent its use by unauthorized persons or organizations, as well as to compensate the damage caused to the author.



**GRUPO ARIGMED S. DE R.L. DE C.V.** TIZAYUCA, ESTADO DE HIDALGO, MÉXICO

www.arigmed.com  Grupo Arigmed Gases Medicinales  ventasmx@arigmed.com  +52-779-7969-370



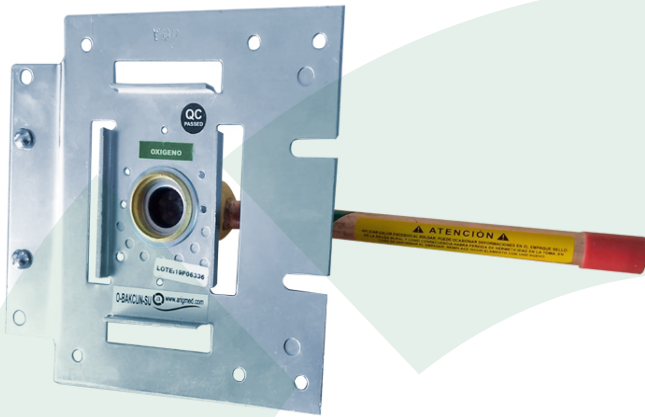
Sistema de Gestión  
ISO 9001:2015



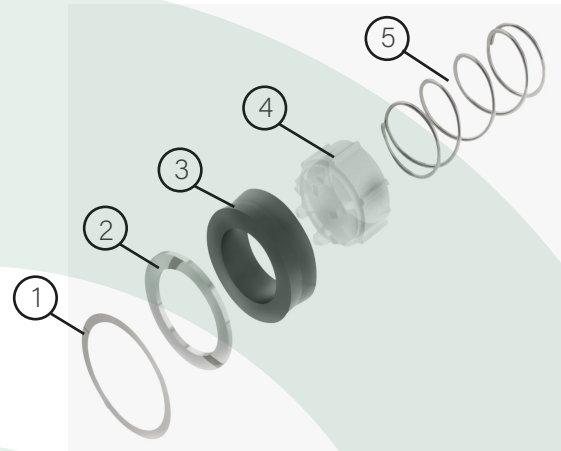
# Medical Gas Outlet

## OHMEDA DIAMOND type

### Wall recessed back assembly



### Back assembly spare parts



### Architectural mount back assembly



item	Description
1	Stainless steel washer
2	Stainless steel spiral lock
3	Seal
4	Injected plastic check
5	Calibrated spring

## Specifications:

### Flow:

- \*Output of 240 LPM, if the diameter of the pipes allows it.
- \*Extraction of 90 LPM, if the diameter of the pipes allows it.

### Working pressure:

\*50-55 PSI

### Maximum pressure test:

\*100 PSI

### Secondary equipment capacity load:

\*450 g

### I.D. available color label:

\*NFPA \*ISO

### Cleaning:

\*NFPA99 \*ASTM B819

## Trim plate:

### Wall recessed:

\*Zamak injection with chrome finish made.

### To architectural equipment mount:

\*High-strength ABS plastic injection in white or gray made.

## Available gases in this technology:




- Medical Oxygen
- Medical air
- Vacuum
- Nitrous Oxide

\*Complies with NFPA99 (Section 5.1.5) for equipment whose components have been factory assembled and mounted.

If the equipment was installed with non-original components and/or with modifications and alterations carried out by third parties, **GRUPO ARIGMED disclaims any liability that may cause injury and damage to persons and property, and factory certifications and warranties will be automatically voided.**



**GRUPO ARIGMED S. DE R.L. DE C.V.** TIZAYUCA, ESTADO DE HIDALGO, MÉXICO

www.arigmed.com  Grupo Arigmed Gases Medicinales  ventasmx@arigmed.com  +52-779-7969-370



Sistema de Gestión  
ISO 9001:2015

